



SHEFFIELD SEXUAL EXPLOITATION SERVICES

Annual Report

April 2015 – March 2016

Contents

Introduction	2
National and Local Context	2
Overview of Service	2
Governance Arrangements.....	3
Model of Delivery	3
Data and Analysis.....	4
Achievements and Impact	6
The Alexi Project (formerly Hub and Spoke)	6
Pieces of Me 2.....	7
Training	7
Taxi Training.....	7
Prevention	8
Protection	8
Pursuit	8
Prosecution	9
Participation	9
Partnership Working	9
Appendix 1 – CSE Service Structure	10
Appendix 2 – CSE Meetings Map	11
Appendix 3 – Sheffield CSE Model	12

Introduction

National and Local Context

Child Sexual Exploitation (CSE) is a terrible crime with destructive and far reaching consequences for victims, their families and society. It is not limited to any particular geography, ethnic or social background. Recent inquiries have highlighted the scale of the problem and it is vital that all partners work closely together to implement robust, coordinated activity at all stages of a child or young person's journey, from identification to early intervention, support and protection.

The Sheffield Sexual Exploitation Service use evidence and information to understand what is happening locally, develop a strategic response, support victims and facilitate police disruption activity and prosecutions.

Recent high profile court cases, local inquiries and reports have raised awareness of the extent of child sexual exploitation. The Independent Inquiry into CSE in Rotherham estimated that 1400 children had been sexually exploited over the 16 year period covered by the enquiry. In 2012 The Office of the Children's Commissioner's inquiry into child sexual exploitation in gangs and groups interim report identified over 2,400 children who were victims of sexual exploitation by groups and gangs between August 2010 and October 2011. The same report identified a further 16,500 children who were at high risk of child sexual exploitation between April 2010-March 2011. The National Crime Agency published figures in 2014 identifying 236 children were believed to have been trafficked for sexual exploitation during 2013.

As well as the scrutiny on the service from professional bodies, the media has been extremely interested in the work carried out locally to address child sexual exploitation. With the support of the Communications & Marketing team a number of media enquiries and freedom of information requests have been dealt with. The local service, in contrast with other CSE news stories across the country, has been represented positively.

Overview of Service

The Child Sexual Exploitation service is a co-located, multi-agency service responsible for tackling sexual exploitation in Sheffield. The service is based at Star House – the central office for Sheffield Futures, a Sheffield based charity which provides a range of services for young people. The service comprises of Sheffield Futures youth workers, management and administrative support staff, South Yorkshire Police Officers (including missing persons co-ordinators), Sheffield City Council social workers, a family / parent support worker, a specialist nurse, and the Alexi Project. The service is operationally managed by Sheffield Futures with co-location and matrix management arrangements in place with partner organisations. A service structure can be found in appendix 1.

The service works to address sexual exploitation on five key principals: prevention, protection, pursuit, prosecution and participation. To achieve this, the service works with partner agencies to prevent sexual exploitation by raising awareness of issues with professionals, businesses, communities and young people. The service promotes a city wide responsibility to protecting vulnerable young people from exploitation in line with the Local Safeguarding Children Board's (LSCB) priorities.

The service uses youth work principles of engagement and strengths based interventions to address underlying contextual factors and to empower young people to make positive choices to keep

themselves safe and reach personal goals. The service gathers information from young people, professionals and communities to pursue those involved in the exploitation of children and young people. The detectives attached to the service are then responsible for bringing offenders to the prosecution stage whilst the wider team support victims through the criminal justice process.

Governance Arrangements

Sheffield's response to child sexual exploitation is overseen by the Sheffield Safeguarding Children's Board, for whom tackling the issue has been a priority since the late 1990s. Oversight of services' work to address sexual exploitation is the responsibility of the Child Sexual Exploitation Strategic Group – chaired by the local authority's Director of Children's Services. This group reports to Sheffield Safeguarding Children's Board's executive board. Membership of the strategic group includes representatives from the statutory sector – police, health, education and social care, as well as the voluntary sector – Sheffield Futures. The Sexual Exploitation Service provides quarterly performance updates to the executive board. The independent chair of Sheffield Safeguarding Children's Board and the Executive Director for Children's Services in Sheffield attend a countywide child sexual exploitation meeting chaired by the South Yorkshire Police & Crime Commissioner.

Beneath the Child Sexual Exploitation Strategic Group sits an operational group, responsible for implementing the city's aims and objectives for tackling sexual exploitation. In order to ensure that the multi-agency approach to addressing child sexual exploitation is delivered at all levels the Sexual Exploitation Service facilitates a practitioners meeting for all interested professionals. This provides a multi-agency arena to disseminate information and a networking opportunity for all relevant agencies. Mapping of all meetings relevant to child sexual exploitation can be found in appendix 2. (Note that the SSES staffing structures and Governance structures were representative of the period April 2015 – March 2016 and may have since changed; they are currently under review by the CSE Strategic Board)

Model of Delivery

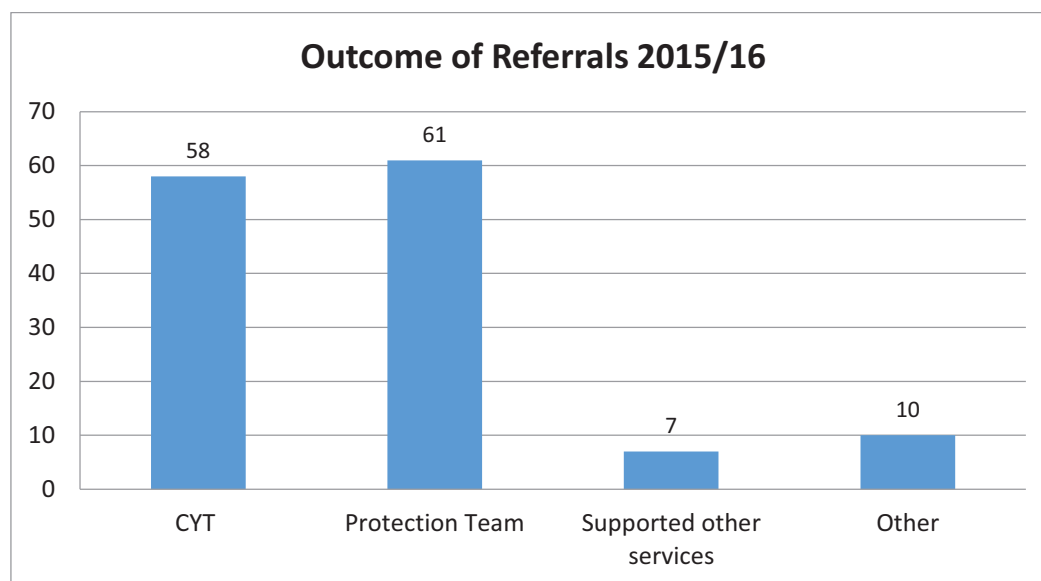
The service utilises a youth-work based approach to work with young people aged 10-21 who are referred due to concerns they may be at risk of sexual exploitation. Professionals, family members, carers and young people can refer into the service. Referrals are directed into the local authority's social care screening process which ensures that risk is considered in the wider safeguarding context. Following screening, the referral is then risk assessed by the service's social care staff, using a South Yorkshire-wide risk assessment tool and is then allocated internally based on level of risk and need

Youth work staff work use a range of evidence based tools and interventions with young people to raise their awareness of risky situations, educate them about relationships and provide sexual health and drug and alcohol related interventions. All direct work aims to promote resilience and self-esteem, and aspiration based focus as a protective factor. The work is designed to support young people to make informed decisions to help them exit exploitative situations and move on with their lives. There are no fixed timescales surrounding the support offered to young people.

Data and Analysis

A total of **136** referrals received between 1st April 2015 and 31st March 2016.

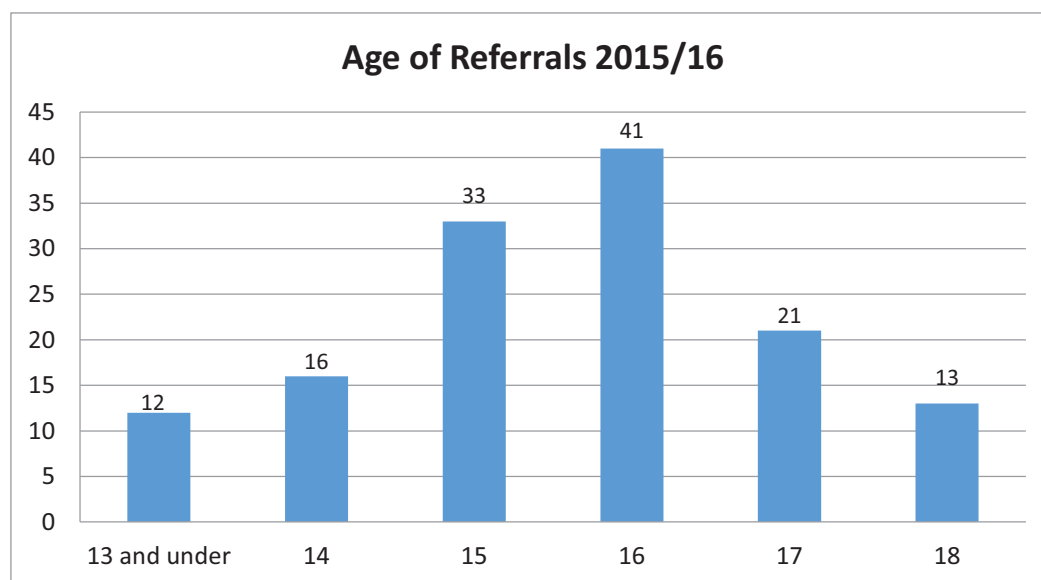
OUTCOME OF REFERRALS



The above graph shows the outcome of the referrals received:

- 44.9% were allocated to the specialist Protection Team workers within SES
- 42.6% were allocated to Community Youth Teams for CSE prevention work
- 5.1% were already being supported by other services, with support from SES; these include NSPCC, Golddigger and Safe@Last
- 7.4% Other include moved out of city, refused a service or there were no issues (No Further Action, NFA)

AGE OF REFERRALS



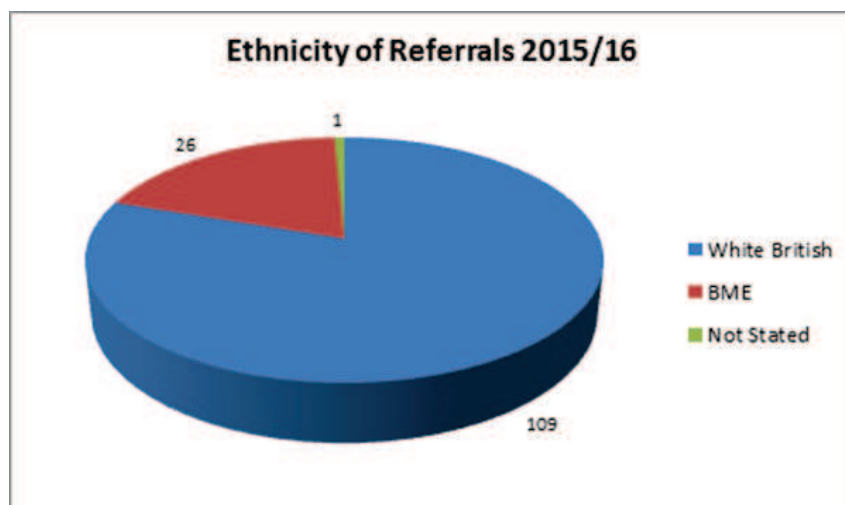
The above graph shows the age of the referrals received:

- The peak age of referrals is age 16 with 30.1% of the total followed by aged 15 24.3%

GENDER OF REFERRALS

Of the 136 referrals this year, 91.9% were for females

ETHNICITY OF REFERRALS



AREA OF REFERRALS

This year there has been a shift in referrals across the city which requires further investigation and analysis.

- 38.2% reside in the East of the city which includes the areas Arbourthorne, Darnall, Manor, Richmond, Beighton, Birley, Mosborough and Woodhouse
- 37.5% reside in the West of the city which includes the areas Gleadless Valley, Nether Edge, Crookes, Dore, Totley, Ecclesall, Hillsborough, Walkley, Broomhill, Fulwood and Central
- 23.5% reside in the North of the city which includes the areas Burngreave, Firth Park, Shiregreen, Southey, Ecclesfield, Stannington and Stocksbridge

LOOKED AFTER STATUS OF REFERRALS

Of the 136 referrals, 19 (14%) are Looked After Children. Of the 19: 63.2% in Foster Care

Achievements and Impact

The Alexi Project (formerly Hub and Spoke)

Sheffield CSE Hub & Spoke Project is one of 15 national Hubs, based within voluntary services and funded by the CSE Funders Alliance. Over three years the remit is to creatively explore the contribution of the Third Sector in sharing good practice and building capacity across geographical neighbours.

The Sheffield Hub is also working as part of a unique model with hubs in Derby and Cambridgeshire to shape best practice in involving young people's voices in CSE policy, service design and delivery.

Governed by a multi-agency steering group which includes Sheffield Futures, Doncaster Children's Trust, Barnsley Council, Barnsley Regulatory Services, Sheffield Safeguarding Board and South Yorkshire Police, the project has just finished its first year of development. The national initiative is being evaluated by the University of Bedfordshire. Key outputs have included:

- Case workers have supported 17 young people in Sheffield and Doncaster who have experienced abuse through CSE using the youth work based model developed in Sheffield.
- 862 Professionals working directly with young people in Sheffield have received Introductory training in preventing CSE and a further 187 have gone on to receive Advanced training. 12 people have been trained in Barnsley and Doncaster with a view to expansion in 16/17.
- A programme of CSE awareness courses for young people has been devised aimed at different ages and delivered to different groups reaching 487 young people in Sheffield and Doncaster. Sessions in Barnsley are due to start in September 2016.
- An awareness raising programme for taxi drivers has been developed based on a nationally award winning programme. This has been delivered in Barnsley and Doncaster. The course has been made mandatory for all drivers in Barnsley this year. The training is already mandatory in Sheffield and Rotherham and is due to become so in Doncaster in the autumn. The project has trained 899 drivers in Sheffield, Barnsley and Doncaster in 15/16 and is due to start work supporting Rotherham.
- Groups of CSE Survivors have been recruited in Sheffield, Derby and Cambridgeshire and are being supported to develop their aspirations personally, and support to enable them to influence CSE policy and practice locally and nationally. CSE Survivors have been supported to consultations with the Minister for CSE, the House of Commons, the NSPCC, the NWG, the University of Bedfordshire and on the new NICE Guidelines on Sexual Abuse. They were also instrumental in designing the national "Say Something" campaign.

What next for Alexi Project?

- Roll out the updated Friend or Foe? Group work programme with a one day "Training for Trainers" across South Yorkshire to increase the skills of professionals working with vulnerable young people.
- Lead on a South Yorkshire wide CSE training strategy for Regulated Services and the Night Time Economy
- Embed a worker within Barnsley and roll out the youth work CSE model and awareness training.
- Establish new participation groups in Lincoln and Doncaster and publish a toolkit of best practice around participation and CSE.

Pieces of Me 2

In 2015 the service published the second edition of the popular Pieces of Me. The booklet is a collection of prose and poetry written by young people who have been supported by the service and have either been victims of abuse or have been at risk of being exploited.

The young people involved in the programme benefitted from the therapeutic impact of expressing their thoughts and emotions regarding their experiences. The booklet itself is used with other young people who are working with the service as a means to of raising awareness of risk and issues relating to child sexual exploitation.

The second edition incorporates more work from boys and young men who have worked with the service and those young people who have been exposed to risk as a result of online issues. A launch event was held featuring a short film.

Training

282 young people in Sheffield have been trained to be aware of the risks of CSE through 15 sessions. These sessions have been targeted towards young people known to be most at risk of CSE including residential units, supported accommodation and alternative curriculum providers.

862 Professionals working directly with young people in Sheffield have received Introductory training in preventing CSE and a further 187 have gone on to receive Advanced training. The Advanced training covers the structure of Sexual Exploitation meeting, in depth understanding of grooming using Maslow's Model of the Hierarchy of Needs (1956), how schools can supported sexually exploited children, how to spot, document and report concerning behaviour such as drug and alcohol use and going missing and what intelligence needs passing to the CSE Investigation Team.

Taxi Training

In 2012, a partnership in Sheffield comprising of Sheffield Safeguarding Children's Board, Sheffield Safeguarding Service and Sheffield Futures developed a training package aimed at empowering taxi drivers to report any concerns which may be of a Safeguarding nature. The training was developed in consultation with the Taxi Trade across South Yorkshire and is based around real-life case studies which drivers have faced. The training covers passengers who may be vulnerable due to their age, ability, understanding, competence or they are the victim of violence or exploitation.

The training is based on three key messages:

1. Taxi Drivers are exceptionally well placed to be the eyes and ears of a community. They are privilege to actions and behaviour which may remain guarded/ hidden in other circumstances.
2. Any information, no matter how insignificant, may help services put together a wider picture that can show us who needs help and what help they need.
3. Working responsibly in this way can also Safeguard Taxi Drivers from dangerous situations or being at risk of misunderstandings.

899 Drivers have received the standardised training session "Safeguarding Vulnerable Passengers" based on the nationally accredited course over 26 sessions. The training is now mandatory in Barnsley and Sheffield for all licence holders. This work will continue in 2016/17 to include Rotherham until all existing drivers are trained and the course becomes mandatory and mainstreamed in all areas.

Prevention

The service continues to raise awareness of child sexual exploitation with young people, professionals and communities. With the support of the Sheffield Safeguarding Children's Board and other partner agencies the service has been able to continue to deliver multi-agency and single agency awareness training. Professionals continue to be supported by the LSCB lunchtime seminar programme. The establishment of a monthly open access 'Introduction to CSE for Professionals Working with Young People' has been a success with bookings throughout the year.

Bespoke awareness raising sessions have been delivered. These sessions use a local and national evidence base to help particular audiences understand the issues around CSE and how they can support a common safeguarding approach within their specific roles and communities.

Targeted work has been delivered to schools both in terms of supporting staff and delivering CSE awareness raising to groups of pupils, for example a 6 week group programme was delivered in a secondary school by the sexual exploitation service to address concerns raised within a particular social group. We work closely with other partners including the NSPCC and the Golddigger Trust who provide bespoke packages of training and interventions in the city to ensure consistent messages.

Protection

The introduction of a one route pathway through social care screening for all CSE referrals has been established. This has ensured that any referral requiring a joint visit by a social worker and police are identified and actioned immediately. The social workers attached to the service still complete the in-depth CSE specific risk assessment to ensure the appropriate level of support is provided.

Awareness raising sessions have been given to Sheffield student social workers and county wide training delivered to social workers and police officers involved in joint investigations.

Those cases that are deemed to be low, or low-medium risk, are referred to the Community Youth Teams (multi agency teams for vulnerable young people) where CSE champions support work being carried out to prevent young people becoming any further entrenched in CSE.

Cases which are risk assessed as being medium or high risk are allocated a support worker from the sexual exploitation service. In all cases an initial meeting involving the young person, their family and professionals, is called to plan the package of support. Regular three month review meetings take place to ensure plans are adhered to or adapted to reflect changing needs

The service continues to develop a 'contextual safeguarding' approach to protecting young people by attending various mapping and intelligence meetings across the city and assessing risk in the young person's context; identifying and understanding where the exploitative situation occurs, and then addressing the factors that foster this in partnership with other agencies.

Pursuit

Having police officers co-located with the service, ensures that intelligence can be shared and information can be acted on to pursue perpetrators of CSE, whilst supporting the victims at the same time. In cases where there is not enough evidence to take a case to court, or it is deemed not to be in the best interests of the young person, it is important that agencies do what they can to disrupt activity and pursue those responsible. This activity is coordinated by the multi-agency service.

Abduction Notices, a police power aimed at preventing inappropriate contact between adults and children are considered when an adult is associating inappropriately with a child or young person under the age of 16, or 18 if the individual is on a full care order. The service ensures it carefully observes local and national cases to continuously inform practice and utilise any legislative changes to achieve the aim of disruption and pursuit.

Prosecution

The Sexual Exploitation Service continues to offer intensive one-to-one support for victims involved in police investigations.

In April 2016 a male who used his respectable employment position to reassure vulnerable young women he could be trusted, was found guilty of rape and serious sexual assaults. A number of the victims were supported by the service and were able to give articulate accounts of the offences committed against them, whilst supported by their workers. The fact that there was already a case building against the male convinced a further victim to come forward and she gave a lengthy disclosure.

The male was jailed for 19 years with the Judge praising ‘the remarkable’ courage displayed by the young women involved.

Participation

Sheffield Futures has a range of participation groups and a key aim of the service was to channel the collective experience and knowledge of some of the service users to inform and influence policy and practice locally and nationally, by supporting them to engage with different organisations.

A group of young people became Sheffield’s first CSE Participation Group and were involved in the National Working Group’s Participation Group, helping to ‘youth proof’ the #Saysomething campaign, aimed at increasing awareness and the reporting of CSE. They also met with Karen Bradley, Minister for Prevention, Abuse and Exploitation to support her understanding around the needs of young people at risk of being exploited. In addition they have supported work on the NICE guidelines for violence in teenage relationships.

Participation is also encouraged on an individual level, by supporting young people to be actively involved in decision making in relation to their own care planning.

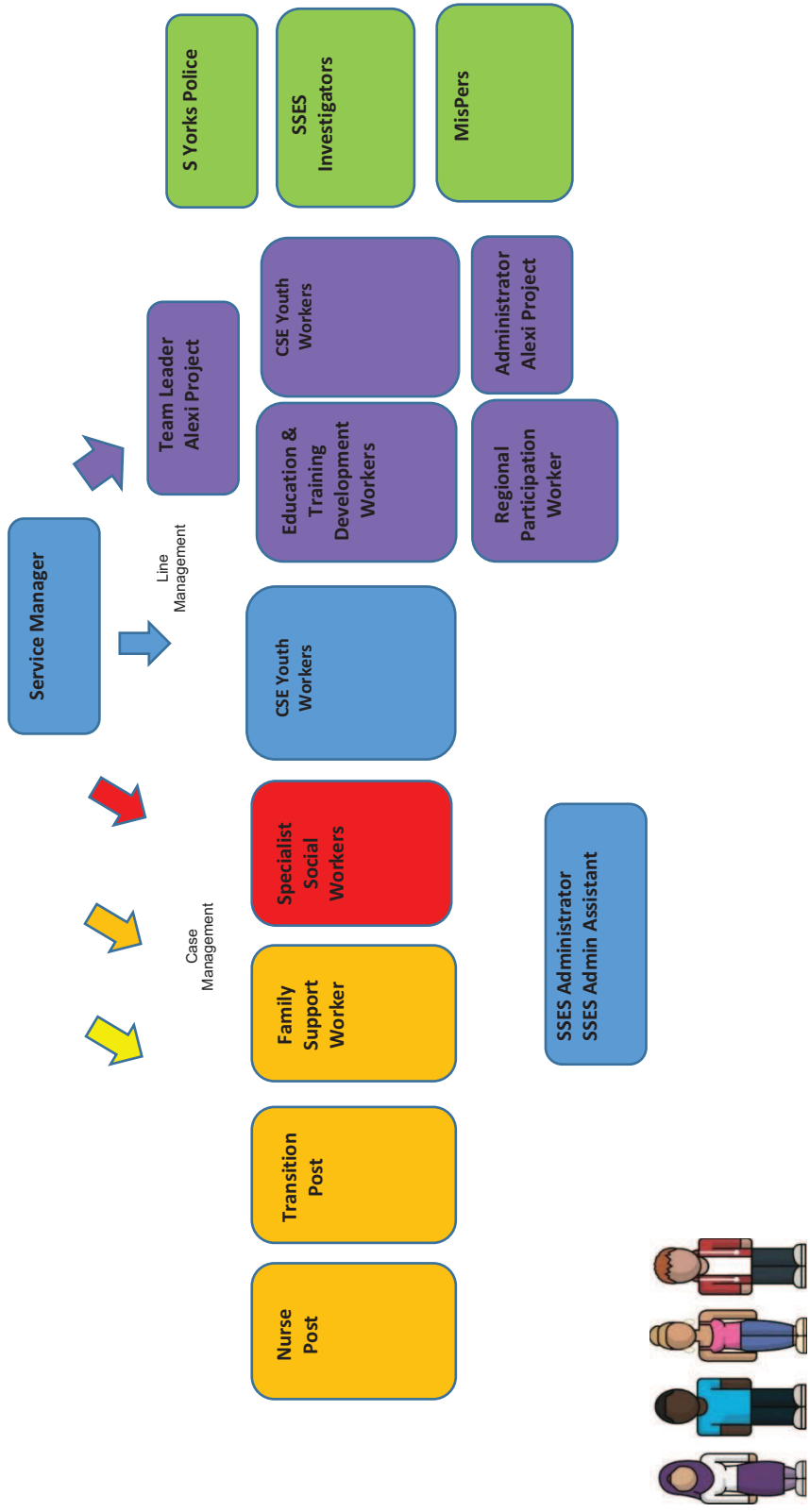
Partnership Working

CSE cannot be tackled by one agency operating alone. They will hold only partial knowledge of the issues, and will be unable to deliver anything more than a partial response. Effective responses must be built on a holistic understanding of the problem which comes from a shared commitment to partnership working. The Sexual Exploitation Service has embedded a fully integrated multi-agency working ethic at all levels.

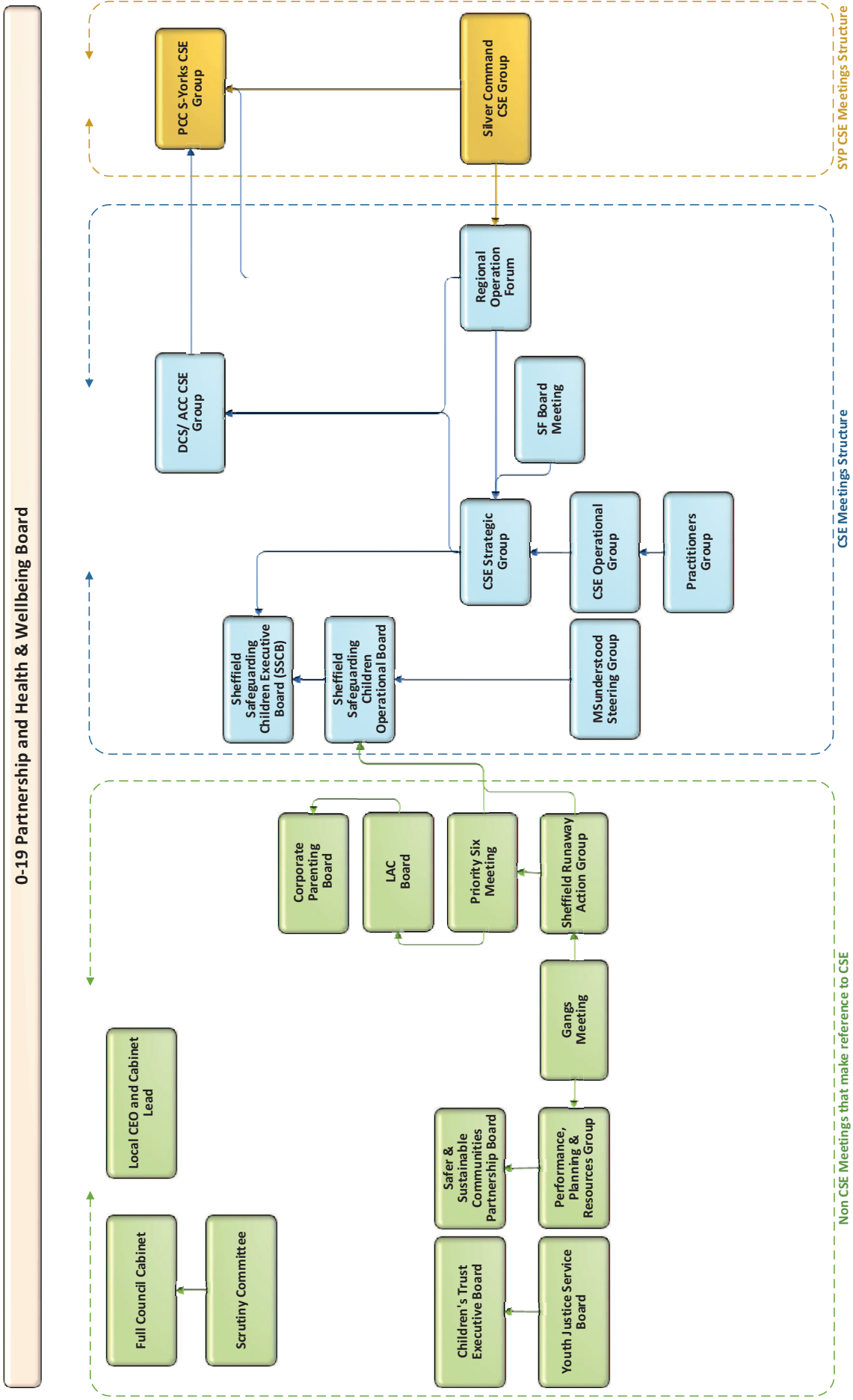
By working collaboratively we hope to maximise resources in the city and ensure there is no duplication of work.

Appendix 1 – CSE Service Structure

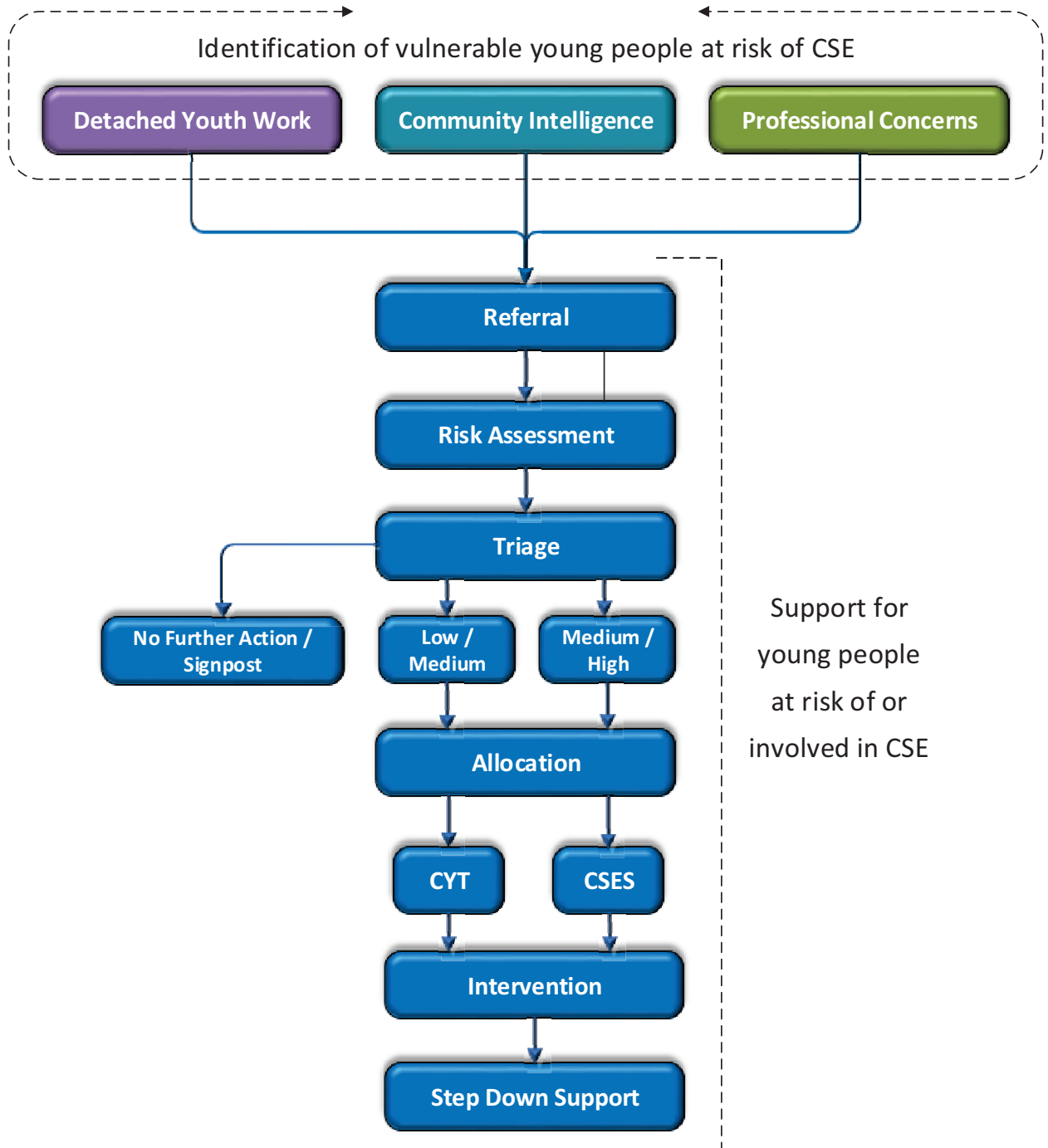
Sheffield Sexual Exploitation Service



Appendix 2 – CSE Meetings Map



Appendix 3 – Sheffield CSE Model



This page is intentionally left blank